





Work Truck West is the work truck equipment division of West Coast Machinery Inc. Along with our excavator attachment division, ShearForce Equipment, we believe that you deserve to have your needs met every single time you work with us by delivering specialized support for specialized equipment.

Our goal is to make it easy for you to coordinate all your medium-duty work truck needs.

At Work Truck West, we pride ourselves on figuring out exactly what you need your work truck to do for you, and getting you to work in your new truck as quickly as possible. We maintain an inventory of truck chassis and work bodies at our shop, getting you in the work truck of your dreams sooner than you think. We offer financing options as well so you can be assured with the financial aspects of your new truck purchase.

As we've done with West Coast Machinery for generations, Work Truck West stands behind our products with comprehensive customizations, maintenance, and repair services.

OUR PEOPLE

Work Truck West prides itself on its people – from the management team and support staff to the production personnel and service technicians, we're all working for you to ensure your unique needs are met every single time you work with us.

OUR TEAM OF SERVICE EXPERTS ARE HERE TO SUPPORT YOUR NEW TRUCK EQUIPMENT, INCLUDING:

Air compressor repairs and parts

Rail gear installations and repairs

Snowplows and sanders

Crane repairs and parts

Inverters and electrical accessories

Tool boxes

Dump box accessories

Service truck accessories

Lift gates

Hydraulic systems repairs and parts

Generator and welder repairs and parts

PTO's and pumps

TIRED OF LONG LEAD TIMES?

Choose one of our Ready-to-Roll trucks and you'll be on your way sooner. We maintain a strong inventory of new service trucks at our facility and with key partners across Western Canada, so you can minimize their down time and get rolling as soon as possible.

Alternatively, you can choose to build your own customized package. Work Truck West offers a menu of options so your truck is perfectly suited for your everyday use. As one of the top suppliers of truck bodies in Western Canada, you'll find our staff experienced and easy to work with. Let us help meet your needs.

For more information or a quote, please contact us at 1.800.255.5211 or sales@worktruckwest.com.

1

CHOOSE YOUR CHASSIS

Provide your own or let us supply you with your Chevy, Ford, Freightliner, Fuso, GMC, Hino, International, Isuzu, Kenworth, RAM, or Peterbilt truck chassis.

- ▶ Regular, Extended or Crew cabs
- ▶ 4X4 or 4X2 available

2

CHOOSE YOUR WORK TRUCK BODY

- ▶ Mechanic Service Bodies and Decks
- ▶ Municipal Utility Service Bodies
- ▶ Dump and Landscape Boxes
- ▶ Crane Trucks and Picker Decks
- ▶ Flat and Custom Decks

3

CHOOSE YOUR ACCESSORIES AND ADDITIONAL EQUIPMENT

- ▶ Electric, telescopic and articulating cranes
- ▶ Air compressor welder options
- ▶ Snow and ice equipment
- ▶ Tool boxes and drawers
- ▶ Lift gates
- ▶ LED lighting and safety gear

WE'VE GOT WORK TRUCKS TO SUIT YOUR INDUSTRY NEEDS

Inside you'll find these icons, which allows you to quickly find the trucks especially designed for use within your industry sector.

 RENTAL COMPANIES	 GENERAL CONTRACTORS	 LANDSCAPING	 MUNICIPAL AND GOVERNMENT
 ROAD BUILDING CONTRACTORS	 MINING AND QUARRIES	 FORESTRY	 OIL AND GAS
 RAILWAY	 DEMOLITION CONTRACTORS	 UTILITIES PROVIDERS	 TIRE SERVICES
			 CONSTRUCTION MACHINERY DEALER



MECHANICS SERVICE TRUCKS

Choose from steel or aluminum mechanics service bodies, engineered to handle heavy crane loads and tough Canadian conditions. Then work with our team of truck equipment experts to build the package you need to get your work done no matter where it takes you.

- Fully-enclosed standard or custom designed body or open service deck
- Satincoat steel and aluminum bodies
- Available in 9' – 19' lengths
- Customize with cranes, air compressors, welders, waste oil recovery systems and more.
- See page 12 for full listing of Accessories and Add On's.



Our Most Popular **MECHANICS SERVICE TRUCK** Packages







FLAT DECK AND CRANE TRUCKS

A strong and sturdy flat deck body is a solid starting point to create your own custom work truck equipment package perfectly suited to meet your business' needs. We carry a large inventory of ready-to-install heavy-duty flat decks that are built to last and to get the job done.



- Aluminum, steel, or wood decking options
- Underbody and behind cab storage cabinets
- Dumping deck options available
- Customized crane mounts and installations specifically designed for your lifting needs.





PICKER DECK TRUCKS

Our picker deck truck packages will help you lift, lower, and move your heavy loads in no time flat. Specially designed for oil and gas and pipeline contractors, picker decks are one of the most widely used crane truck packages in the industry.



- Custom designed flat deck configurations
- Articulating knuckleboom cranes with hydraulic outriggers
- Pipe and tool holders and racking
- Underbody and behind cab storage cabinets
- Welder and air compressor stations





DUMP AND LANDSCAPER TRUCKS



Whether you're looking for a basic dump truck package, or a full-featured unit with additional cabinets, articulating crane, traffic director lighting, or other options, Work Truck West has what you need to get you working faster.

- Dump boxes available in 9', 11', or 12' lengths
- Steel or aluminum dump bodies
- Quick-drop tailgates, fold-down sides, asphalt chutes, and handheld in-cab remote controls
- Landscaper bodies also available.





SNOW AND ICE TRUCKS

We carry the full Fisher product line of snow and ice control equipment. We also service what we sell with fast turnaround times and high quality results.



- Fisher Straight Blade and V-Blade snowplows
- Fisher Steel-Caster and Poly-Caster spreaders
- Pre-Wet System available now
- LED or Halogen lighting
- Dump bodies or flat decks add year-round versatility.
- Camion Liquid Sprayers





MUNICIPALITY UTILITY SERVICE TRUCKS

We work with you to create custom work truck packages that fit your municipality's or district's needs.



- Start with a needs assessment before discussing design options and specifications
- Expert assistance determining budget costs and the tendering process
- Continual support and updates through fabrication, production, and delivery.







ACCESSORIES AND ADDITIONAL EQUIPMENT

LIFTING AND LOAD ASSISTANCE

We've got your lifting and load assistance needs covered for your work truck package. All of our professional crane installations are supported by engineered drawings and stability tests, and are certified for use on job sites anywhere in Canada.

- Telescopic cranes
- Articulating knuckle boom cranes
- Stiff boom cranes
- Electric cranes
- Liftgates



AIR COMPRESSORS AND MULTIFUNCTION UNITS

Whether your job calls for a hydraulic, engine-driven, gas- or diesel-driven, underdeck or underhood compressor, we can provide the size and type you need on your work truck.

- VMAC underhood and transmission mounted air compressors
- VMAC gas or diesel above deck air compressors
- VMAC Raptair multifunction power systems
- Miller EnPak Welder Generator Compressor combos
- Vanair hydraulic and underdeck air compressors
- Vanair Air N Arc welder / air compressors
- Miller welders
- Welder / hose reels



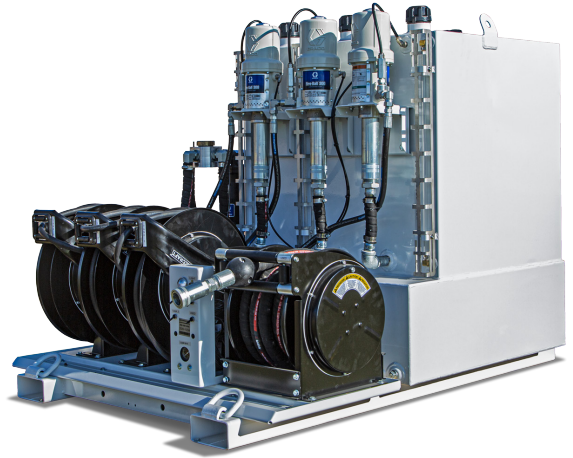
ADDITIONAL EQUIPMENT AND ADD-ONS

OIL AND LUBE SYSTEMS

- Lube skids / tanks
- Oil recovery systems
- Fuel tanks and filling stations
- Custom skids / tanks

ACCESSIBILITY AND FUNCTIONALITY

- Hydraulic tool systems
- 12/24 volt battery boosters
- Checker plate running boards
- Cabinet heater systems
- Espar heater systems
- Laptop stands
- 6" vises with cover
- Spare tire racks



LIGHTING AND VISIBILITY

- LED amber beacons
- LED buggy / safety whips
- Additional cabinet and load space lighting
- Exterior work lights
- Rear back-up cameras



STORAGE AND SHELVING

- Additional tool chests and drawer packs
- Sliding work trays
- E-track system with hooks
- Pry bar / hammer holders

MORE OPTIONS AVAILABLE, CONTACT US TODAY!



SERVICE YOU DESERVE, WHEN YOU NEED IT.

Our service philosophy is simple. It's all about minimizing your down time and getting your equipment back in operation. Work Truck West delivers prompt service and top quality warranty support. We can also service your mounted equipment at our 31,500 sq ft shop facility located in the central Fraser Valley region in BC, or from our sales and service center in Airdrie, Alberta.

OUR CAPABILITIES INCLUDE INSTALLATIONS, MAINTENANCE AND REPAIR, AND TECHNICAL SUPPORT FOR:

- Truck-mounted telescopic and articulating cranes
- Compressors and air systems
- Generators and welders
- PTO's and pumps
- Hydraulic systems and tool circuits
- Underhood or underdeck mounted equipment
- Lift gates and winches
- Rail gear.

WE ALSO HANDLE

- Annual truck-mounted crane inspections
- New crane or compressor installs on existing bodies
- Steel and aluminum body repairs and fabricating

PARTS

Getting you the right parts, right on time, is the focus of our Parts department. We stock all the major wear items and service kits for your truck equipment, including oil and lube kits for cranes, compressors, and other mounted truck equipment.





WHETHER YOU NEED NEW PARTS, MAJOR REPAIRS, OR JUST SOME FRIENDLY ADVICE, OUR TEAM IS HERE FOR YOU.





Needs. Met.



TOLL FREE 1.800.255.5211
WORKTRUCKWEST.COM